

# Through-Tubing Perforating Services

On Depth, On Time, Delivering Value

Through-Tubing Perforating plays a vital role throughout the life of the well - from initial well commissioning to production optimization activities such as skin remediation and accessing bypassed or secondary targets. These interventions are essential to maintain robust contact with the reservoir to maximise economic recovery.

Expro offers a comprehensive portfolio of perforating systems sourced from leading global providers, ensuring best-in-class performance. As an independent service provider, we tailor the solution to meet both operational requirements and reservoir objectives, whether that's accessing low-perm zones, mitigating skin damage or improving injectivity.

Optimal perforating performance starts with selecting the right gun configuration - shot density, phasing, charge type, penetration depth and debris profile all influence the result. To support this, Expro can combine two advanced modelling tools: PulsFrac™ and WEM™ (Well Evaluation Model). Together, they simulate dynamic perforating performance and reservoir response. This includes tunnel geometry, debris clearance, formation reaction, pressure behaviour and injection dynamics - all under specific well conditions. This integrated approach ensures each perforating design is fully engineered, operationally viable and aligned with reservoir objectives - delivering confident, on-target results.

## Key Through-Tubing Perforating Applications

- Production and Injection zone access
- Skin damage remediation
- Pump down Plug and Perf for multi-stage horizontal fracs
- Oriented perforating
- Precursor for well stimulation
- Precursor for cement squeezes

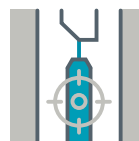
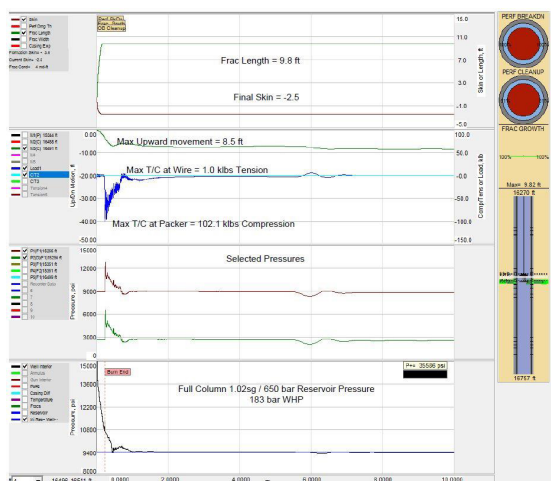
Once the optimal perforating solution has been selected for the application, it can then be matched with an operationally efficient deployment method. Expro's comprehensive suite of deployment options is designed to deliver perforating systems to depth - safely, accurately and with the highest level of initiation integrity.

## Deployment Options

- E-Line
- Slickline
- Slick-E-Line
- Tractors
- Pump-down

## Why choose Expro?

- Access to industry-leading perforating systems
- Comprehensive deployment options, including Dual Drum "Combo" Units for multi-service small footprint intervention
- PulsFrac® and WEM™ modelling to optimise job design
- High-integrity eXequor™ Trigger and SEL-SAS initiation systems for Slickline and Slick-E-Line deployments
- Global reach, rapid mobilisation and local execution



Cased Hole Services

To discuss an application, contact:

wellintervention@expro.com  
expro.com/products-services/well-intervention

Through-Tubing Perforating Services

On Depth, On Time, Delivering Value.