

Well Construction

Cementing Technologies



One trip cementing and well barrier creation.

BarrierCure utilizes the SeaCure™ inner-string to mechanically activate a proprietary valve that is run at the bottom of a casing or liner, immediately after the primary cement job, as part of the cement placement string. This eliminates or significantly shortens the shoe track, providing a qualified mechanical barrier at the base of the well. This system also eliminates the clean out trip and bridge plug run, allows negative testing, balanced plug placement and displacement to suspension fluid in one trip, saving multiple days of rig time.

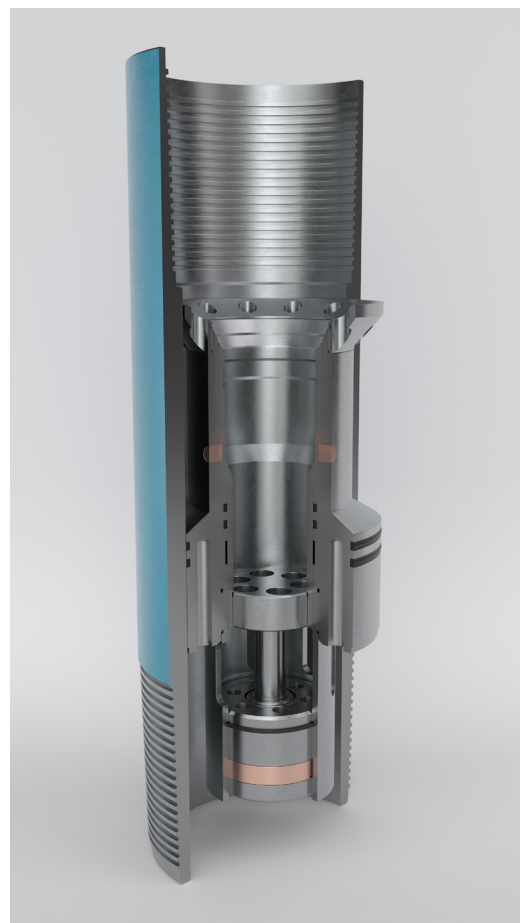
Applications

Production casing or liner strings where suspensions may be necessary following cementing operations for:

- Long and short term suspension
- XT installation

Features and Benefits

- Internal assembly can be PDC drillable
- Activated using Expro Cure Technology
- Primary cement through BarrierCure without exposing critical seals or sealing surfaces
- Immediate, post-cementing V0 barrier establishment
- Set second barrier immediately on BarrierCure base
- Fluid circulation and suspension for immediate abandonment operations



Feature	Drillable (Aluminium)	Non-Drillable (4140)
Minimum Liner/Casing OD	7.00 in / 177.8 mm	4.50 in / 114.3 mm
Temperature Rating	68-200°F / 20-93°C	68-356°F / 20-180°C
Pressure Rating	12.5 ksi / 850 bar	20 ksi / 1 360 bar
Qualification Level	V3	V0
Qualification Standard	API 11D1	API 11D1 / HPHT
Minimum flow through area/ID	4.71 in ² / 6 x 1.00 in	2.78 in ² / 1.88 in
Additions	Anti-debris feature	