

Expro Excellence

First OnePatch system deployment in Europe to isolate unwanted water production

Coretrax | CORE



Objectives and background

- The customer was experiencing unwanted water production from the 2041–2044 m interval. Previous cement squeeze attempts across the perforations had been unsuccessful. They approached Expro seeking a solution that would minimize ID restrictions and preserve flexibility for future well interventions
- As a new customer, they were particularly drawn to Expro's differentiated technology offering

Expro Excellence

- After evaluating the operational requirements, Expro proposed the OnePatch system – a single joint, rig ready, expandable casing patch. Utilising the OnePatch provides a safe, efficient and cost effective remedy to achieve zonal isolation
- Expro's OnePatch provides effective sealing of unwanted water or gas through perforation shut-off, making it a strong alternative when cement squeezes or traditional remediations have been unsuccessful
- OnePatch only requires one make-up connection before running in hole, saving rig time and operational costs. Its compact, efficient design further reduces expenditure
- The system is designed so no personnel are required for deployment, lowering HSE exposure and reducing overall operational risk and logistical burden

Value to the client

- By deploying Europe's first OnePatch system, Expro enabled a new customer to achieve effective water shut-off with minimal ID restriction and maximum intervention flexibility
- Expro's OnePatch delivers fast, reliable zonal isolation with minimal disruption to well operations, giving our customer a cost-effective, long-lasting alternative to traditional remediation methods. It restores well integrity even when cement squeezes have failed
- Maintains a large internal diameter after installation, ensuring minimal restriction and preserving flexibility for future interventions

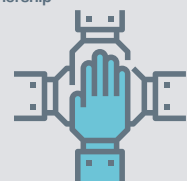


We are very pleased with the OnePatch installation, and the positive response observed from the well"

Bespoke solution



Partnership



Innovative solution

